

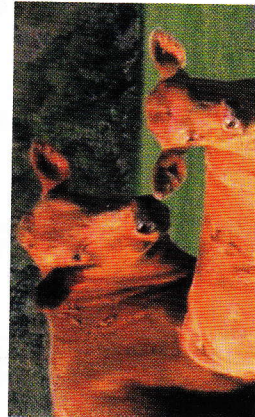


7.5% INCLUSION RATE
7.5 kg concentrate per 1000 kg complete feed

Sico
CONCENTRATES
FOR SWINE, CATTLE, SHEEP & GOATS

SICO Protein concentrates are a high quality mix of marine & vegetable protein sources and contain all the essential vitamins, mineral, trace elements, amino-acids, protein, energy and fibre requirements of the animals.
These concentrates DON'T contain animal proteins and are produced as per latest E.C. regulations.
Any antibiotic or growth promoter and/or coccidiostat and/or flavour and/or egg yolk pigments, etc. can be added on client's specific request.
Our protein concentrates are available in different inclusion rates: 2.5% and 5% and 7.5% and 10% and 20 - 30%.
Moreover for every animal we offer a choice of different standard concentrates to match local conditions (budget price, locally available raw materials, etc.).

TRULY EVERY TIME THE RIGHT SOLUTION!



NAME CODE nr.	PIGGVMIX 7.5/37 1459.01	PIGGVMIX 7.5/42 1459	PIGOMIX 7.5/35 1453.01	PIGOMIX 7.5/40 1453	RUMIMIX 7.5/25 1429.01	RUMIMIX 7.5/30 1429	OVMIX 7.5/25 1455.01	OVMIX 7.5/30 1455
	Piglet, starters & growers, Pig fattening		Pig fattening, Sows, Boars		Lambs, Sheep, Goats			
Destination	Piglet, starters & growers, Pig fattening		Pig fattening, Sows, Boars		Lambs, Sheep, Goats			
Calculated Percent Analysis								
Crude Protein	37	42	35	40	25	30	25	30
Crude Fat	3	5	3	5	2	4.5	2	2
Crude Fibre	3	3	3	3	7	7	8.5	8.5
Calcium	7.5	7.5	7.5	7.5	5	5	5	5
Phosphorus	3.7	3.7	3.7	3.7	1.5	1.5	1.5	1.5
Salt (NaCl)	3.3	3.3	3.3	3.3	9	9	9	9
Lysine	5.8	5.8	5.2	5.2	--	--	--	--
Meth. + Cystin	1.4	1.4	1.4	1.4	--	--	--	--
Feed Units	--	--	1,450	--	600	--	--	--
Net Energy Swine	1,450	1,750	1,450	1,750	600	850	600	750
Vitamins added per kg								
A	200,000	200,000	166,600	166,600	133,333	133,333	133,333	133,333
D3	33,300	33,300	33,300	33,300	26,666	26,666	26,666	26,666
E	533	533	333	333	266	266	266	266
K3	33	33	25	25	--	--	25	25
B1	10	10	10	10	--	--	7.5	7.5
B2	84	84	84	84	--	--	62.5	62.5
B3	24	24	24	24	--	--	175	175
B6	10	10	10	10	--	--	7.5	7.5
B12	506	506	506	506	--	--	38	38
Nicotinic Acid	533	533	533	533	--	--	400	400
Choline Chloride	4,000	4,000	4,000	4,000	--	--	--	--
<i>Protein</i>	1,666	1,666	1,666	1,666	--	--	--	--
<i>Folic Acid</i>	13	13	13	13	--	--	--	--
Trace Elements added per kg								
Iron (Fe)	2,000	2,000	2,000	2,000	2,000	2,000	2,000	2,000
Copper (Cu)	2,130	2,130	266	266	133	133	--	--
Zinc (Zn)	1,333	1,333	1,333	1,333	1,333	1,333	1,333	1,333
Manganese (Mn)	666	666	666	666	666	666	666	666
Cobalt (Co)	17	17	17	17	17	17	17	17
Iodine (I)	17	17	17	17	17	17	17	17
Magnesium (Mg)	--	--	--	--	666	666	666	666
Selenium (Se)	5	5	5	5	5	5	5	5
Additives added per kg								
Antioxydant	1,500	1,500	1,375	1,375	1,333	1,333	1,333	1,333
Preservative (Mould inhibitor)	incl.	incl.	incl.	incl.	incl.	incl.	incl.	incl.